

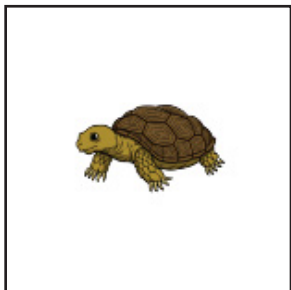


mōniyāw sākahikan nihithawīwin

describe nouns

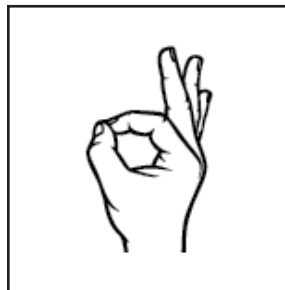


frog



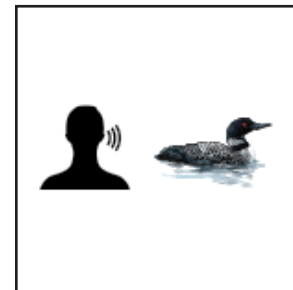
nanistkac
aσyb-

badger



mithosiw
Γεϙ°

beaver



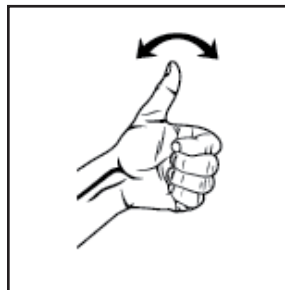
niphtawaw mwakwa
σV"CΔ° L.b.

goat



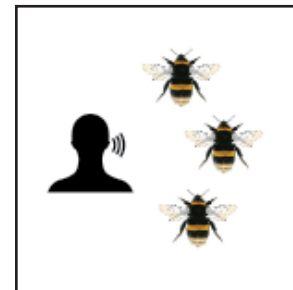
takākinakosiwak
Cbpā.dʀΔ\

bat



mithe
Γε

buffalo



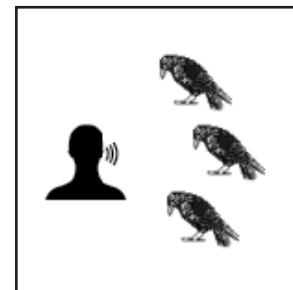
niphtawawak amowak
σV"CΔΔ\ ΔJΔ\

bear



niphtawaw atim
σV"CΔ° ΔNc

bush mouse



niphtawawak ahasiwak
σV"CΔΔ\ Δ\ΔʀΔ\

